

Harmers



International Inc.

www.HarmersInternational.com

NOT Affiliated with
H.R. Harmer, Inc.

Ph. 212.532.3700 1325 Echo Hill Path, Yorktown Heights, NY 10598 USA

Fax. 914.962.5885

eMail: info@HarmersInternational.com

LOT NUMBER 88

POSTAGE

PRINTED BY TRUMAN, CORPORATION & CO.
1687-465

Perforated 1/8

Four Dollars in 20-40 Values 24 SLT, X Type 1 200	25 WASH Type 1 200	25 SLT, X Type 1 200
--	-----------------------------	-------------------------------

25 WASH Type 1 200	25 SLT, X Type 1 200	25 WASH Type 1 200	
-----------------------------	-------------------------------	-----------------------------	---

25 WASH Type 1 200	
-----------------------------	---

	25 WASH Type 1 200	25 WASH Type 1 200	
---	-----------------------------	-----------------------------	---

25 GREEN Type 1 200		25 WASH Type 1 200	25 GREEN Type 1 200	
------------------------------	---	-----------------------------	------------------------------	---

25 SLATE 200	25 SLATE 200		25 SLATE 200
--------------------	--------------------	---	--------------------

POSTAGE

Printed by The National Bank Note Co.

1940



Flight
10c
GREEN
10c



Flight
10c
GREEN
AND BLUE
10c



Postage of
10c
GREEN
AND VIOLET
10c



Postage
10c
GREEN
AND BLACK
10c

Postage
10c
GREEN
AND BLUE
10c

Postage
10c
GREEN
AND VIOLET
10c

Postage
10c
GREEN
AND
BLACK
10c

1189

POSTAGE

Printed by the Continental Bank Note Co.

1876

Some stamps are those of 1876-77 but with serial marks on the copies from 1876-1877



1878



POSTAGE

Printed by The American Book Co.

1927



1928



1929-32



1933

U.S. POSTAGE

10c

POSTAGE

UNITED STATES POSTAGE

1885



1886-88



POSTAGE

Washington 1876-1878



1-cent
2-cent
3-cent
4-cent



12-cent
13-cent

1876-1878



14-cent
15-cent

16-cent
17-cent

18-cent
19-cent

20-cent
21-cent

1878



POSTAGE

Washington 1876-1878
1876-1878
1000-1878
1000-1878



1000	1000
1000	1000
1000	1000
1000	1000

On Other Envelopes Paper

1000	1000	1000	1000	1000
1000	1000	1000	1000	1000
1000	1000	1000	1000	1000
1000	1000	1000	1000	1000

1000	1000	1000	1000
1000	1000	1000	1000
1000	1000	1000	1000
1000	1000	1000	1000



1000	1000
1000	1000
1000	1000
1000	1000



POSTAGE

1912-14

Watermarked USPS



1914-18

Watermarked USPS

Postmarked 19



POSTAGE

Unwatermarked

1916-23

Postmark 10



Notes

NO

CORRECTION

1916



POSTAGE

Germany

1917-18

Postmark (1)



Harmers International, Inc.

A photograph of a stamp album page. The page is off-white and contains several stamps. At the top, there is a group of red stamps, including a 2-cent stamp and a 4-cent stamp, and a green stamp. Below these are more red stamps, some in pairs and some in groups. At the bottom, there are several black stamps, including a 1-cent stamp and a 2-cent stamp. The stamps are arranged in a somewhat organized manner, with some groups and some individual stamps. The background of the page is mostly blank.

Harmers International, Inc.

POSTAGE
PAID
1924



1924. 1-cent Postage

POSTAGE

Switzerland
1888-99
Batory-Pisani-Pisani
C. G. Walker
Particular to Switzerland



Particular to Switzerland



1891-1900
Hending-Neuwald Issue



Batory-Pisani-Pisani



1891-1900
Particular to S. S.

Regener-Walder-Telesensky Issue



1899

Lehmann-Götsche Issue



POSTAGE

1926

Minneapolis

Postoffice #1

Norval-Edickson Issue



1926-28



Sequoia National Issue

1926



Graves Memorial Issue



O'Neil Platen Issue



POSTAGE

Unissued
1868-87
Early Post Office
Issues



Postage 1868-87



Post Office Printing
Postage 1868-87

Various Supplemental Issues



Various Supplemental Issues



1824

Valley Forge Issue



Harmers International, Inc.



1907



19037

1907



19069

1907



18495

Harmers International, Inc.

POSTAGE

Characteristics

1894

Edison Commemorative Issue

Flat Plate Printing
Perforated 14



Heavy Press Printing
Perforated 14 (1894)



Heavy Press Flat Plate
Perforated 18 Vertically




Flat Plate Printing
Perforated 14

Pullman Expedition Issue



Heavy Press Printing
Perforated 14 (1894)





Harmers International, Inc.

1908 24
Tullahoma, Tenn.

20421



20422





Harmers International, Inc.



Harmers International, Inc.

934



756

2128



241

Harmers International, Inc.



Harmers International, Inc.



Harmers International, Inc.



Harmers International, Inc.



UNITED STATES POSTAGE
SIX CENTS
MOUNT RUSHMORE NATIONAL MONUMENT
PLATE NUMBER 204



UNITED STATES POSTAGE
SIX CENTS
MOUNT RUSHMORE NATIONAL MONUMENT
PLATE NUMBER 204

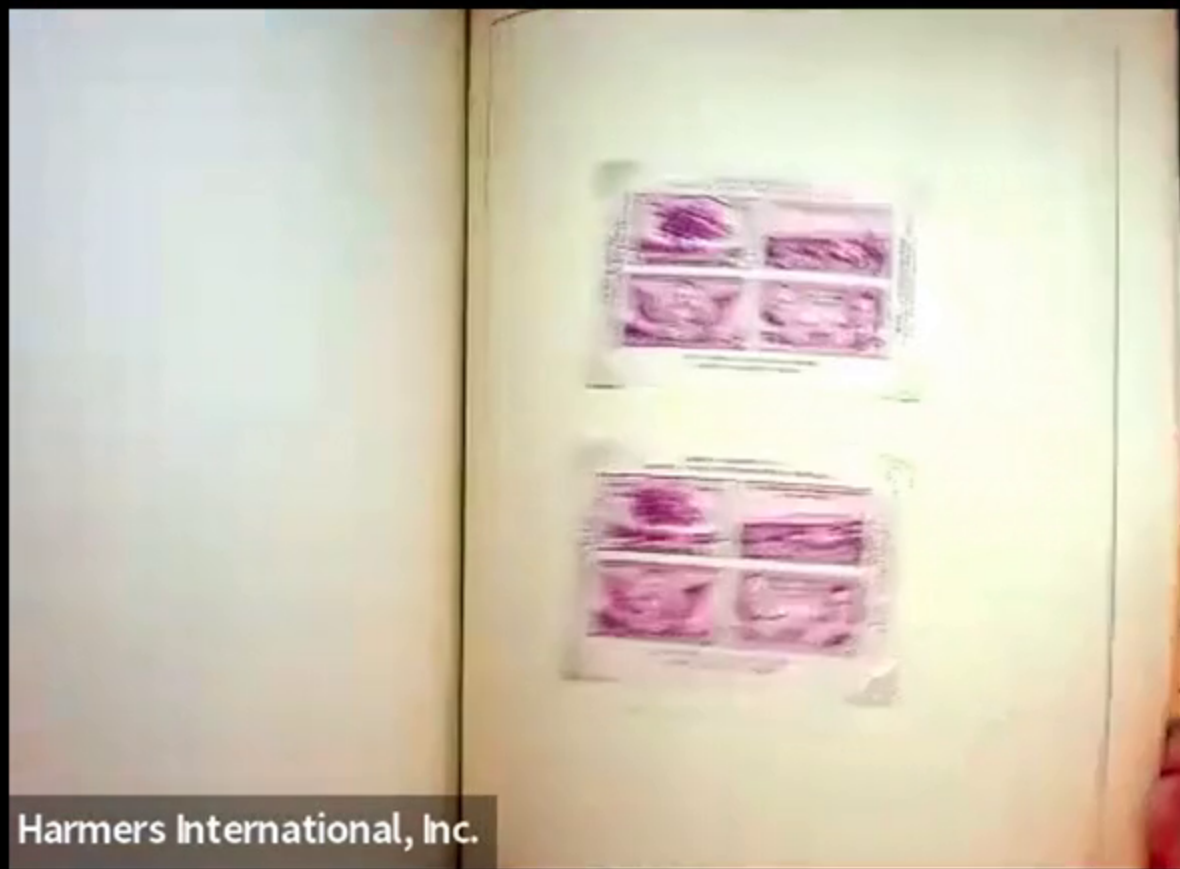


Three 10c
1900-1901



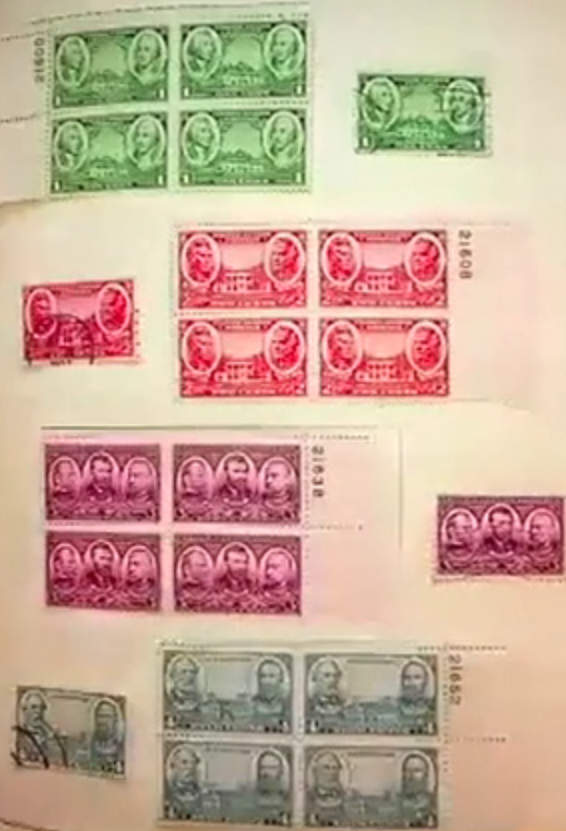
Three 10c
1900-1901

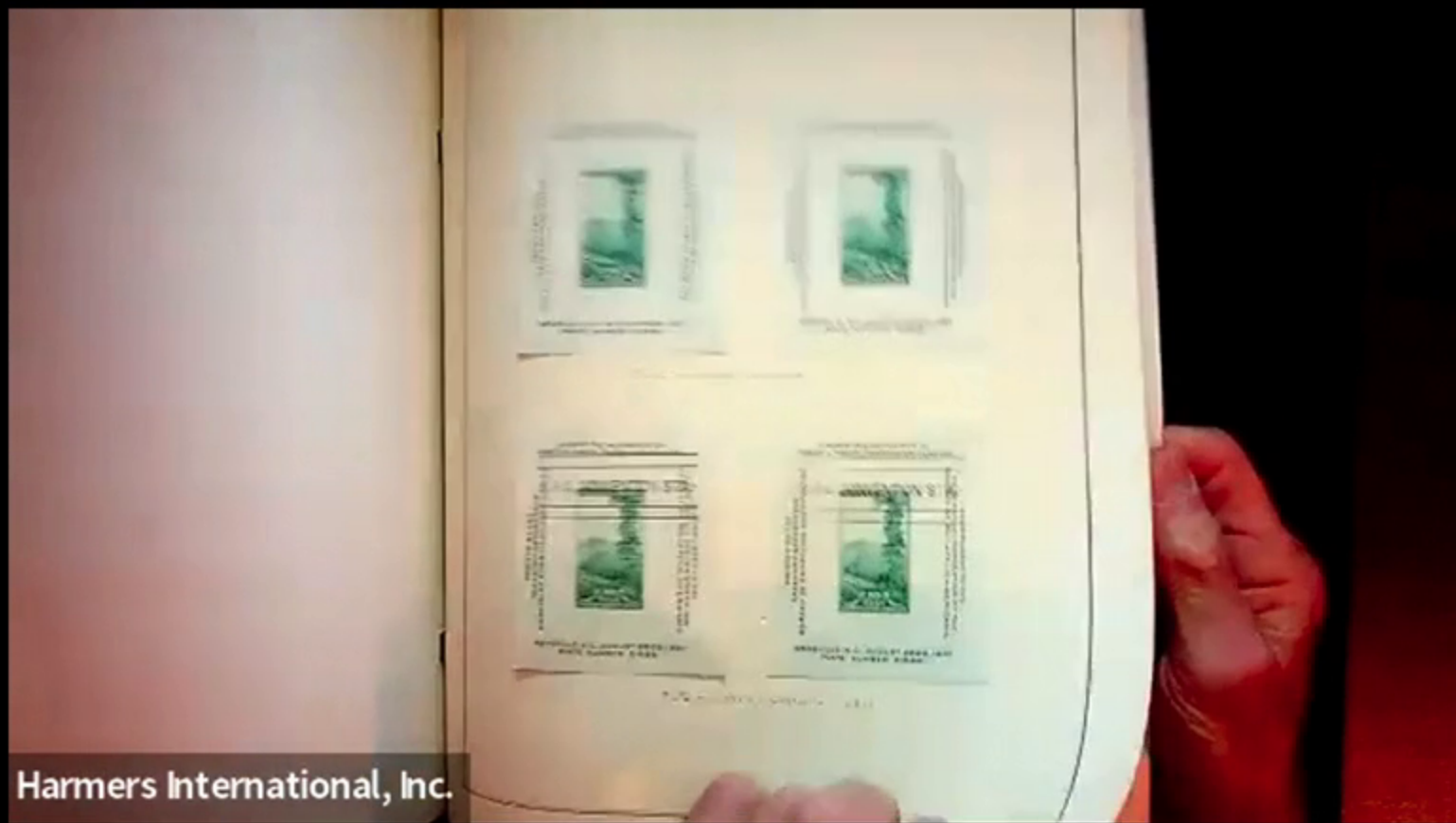
Three 10c
1900-1901




Harmers International, Inc.

Harmers International, Inc.






Harmers International, Inc.



Harmers International, Inc.



Harmers International, Inc.



Harmers International, Inc.



Harmers International, Inc.

22521



22523



22526

22524



Mrs. Antonette P. Noyes
603 Williams Avenue
Plainfield
New Jersey

The Hayes Eleven Cent Stamp

By JOHN FRANKLIN

It is a well known fact that the two denominations of the 1872 issue of the Hayes eleven cent stamp were printed at the post office at Proctor, Ohio, and that the stamps were printed with the intention of the one hundred anniversary of the death of President Hayes. There have been rumors to the effect that the stamps were printed at the post office at Proctor, Ohio, and that the stamps were printed at the post office at Proctor, Ohio, and that the stamps were printed at the post office at Proctor, Ohio.

1872
A-166

Post Office
Proctor, Ohio



Proctor
- 1872 A-166



Harmers



International Inc.

www.HarmersInternational.com

NOT Affiliated with
H.R. Harmer, Inc.

Ph. 212.532.3700 1325 Echo Hill Path, Yorktown Heights, NY 10598 USA

Fax. 914.962.5885

eMail: info@HarmersInternational.com

LOT NUMBER 88